



# GMT MONTHLY MEMBERSHIP PROGRESS REPORT

Results as of: 2/29/2020

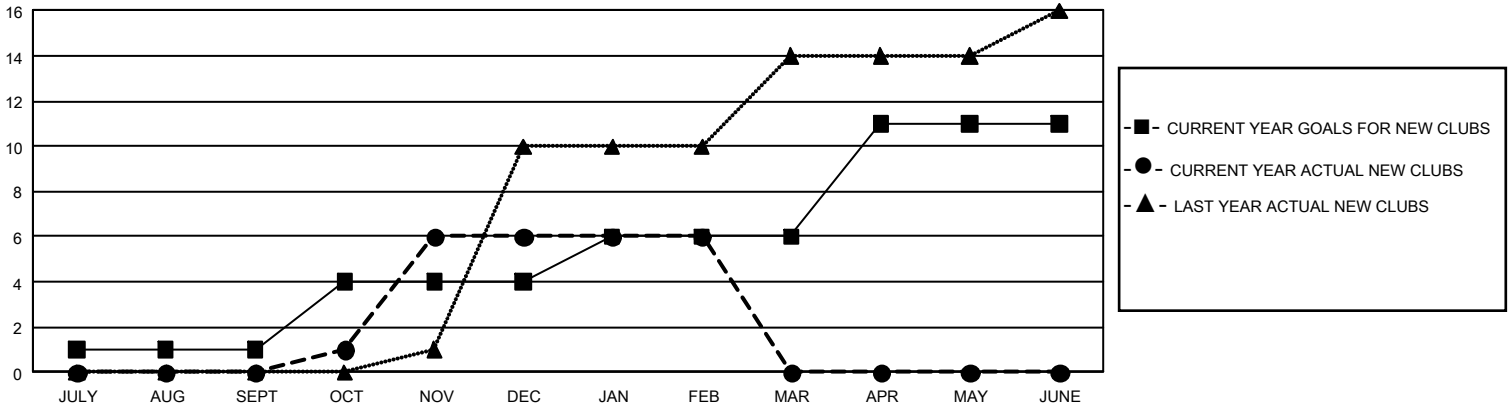
## GMT Constitutional Area 3, Group D

GMT: OPEN

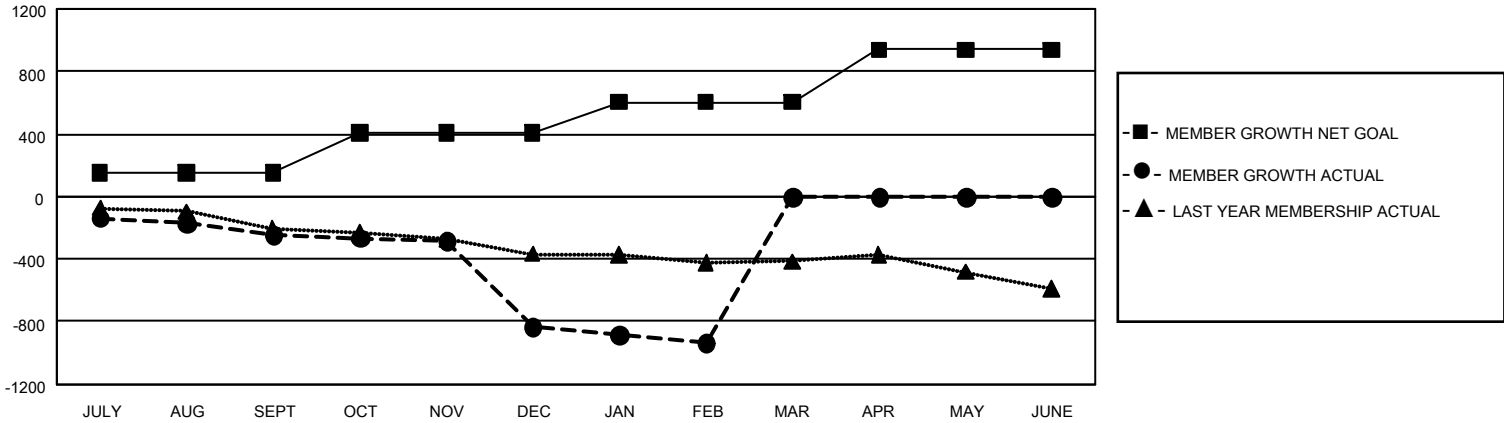
REPORT DOES NOT INCLUDE CLUBS IN UNDISTRICTED AREAS.

Clubs				Members			
RESULTS FOR 2019-2020				RESULTS FOR 2019-2020			
QUARTER	NEW CLUB GOAL	NEW CLUBS	DROPPED CLUBS	QUARTER	MEMBER GROWTH NET GOAL	MEMBER GROWTH ACTUAL	DROPPED MEMBERS ACTUAL (including transfers)
JULY/AUG/SEPT	3	0	4	JULY/AUG/SEPT	456	184	403
OCT/NOV/DEC	9	6	21	OCT/NOV/DEC	759	350	911
JAN/FEB/MAR	6	0	3	JAN/FEB/MAR	594	76	171
APR/MAY/JUNE	15	0	0	APR/MAY/JUNE	1,008	0	0

**GOALS AND ACTUAL NEW CLUBS CUMULATIVE**



**GOALS AND ACTUAL MEMBERS CUMULATIVE**



<b>DROPPED CLUBS: 28</b>	197 CLUBS OF 610 ADDED 1 OR MORE NEW MEMBERS	<b>GENDER DISTRIBUTION</b> MALE            5,767 (53.70%) FEMALE         4,972 (46.30%)
<b>DROPPED MEMBERS</b> DECEASED            106 CLUB CANCELLED      251 OTHER                 1,126 <hr/> <b>TOTAL                    1,483</b>	<a href="#">CLICK HERE FOR CUMULATIVE MEMBERSHIP DATA</a>	TOTAL FAMILY UNIT MEMBERS            3,663  FAMILY MEMBERS PAYING HALF DUES      1,944